



**BOB CORNELISSEN,  
MVP, TOPQORE**

**SCOM 2022**

**Upgrading SCOM – Fast and Furiously**



***FAST & FURIOUS***





**Award Categories**

Cloud and Datacenter  
Management

**First year awarded:**

2012

**Number of MVP Awards:**

10

**Bob Cornelissen**

**Nickname = SCOM-Bob**

**10-year Microsoft MVP**

**Technical Director**



**TOPQORE**

**Hobby: Billiards**

**“House of Tails” charity ambassador**

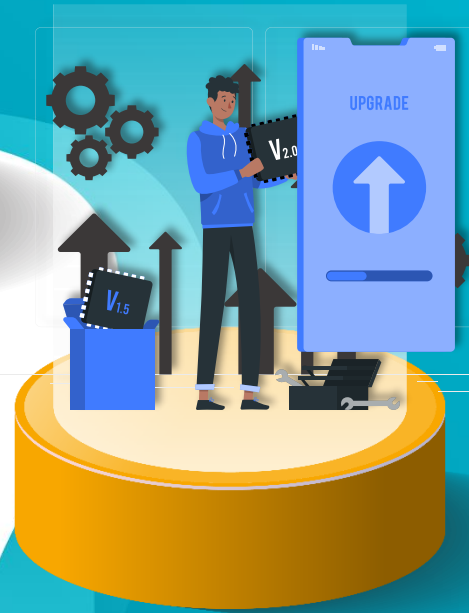
# About TopQore



**Health Check**



**Training**



**Implementations  
Upgrades &  
Migrations**



**Maintenance**



**Introduction** 01

**SCOM  
Versions** 02

**New  
features** 03

**Upgrade  
tree** 04

## AGENDA

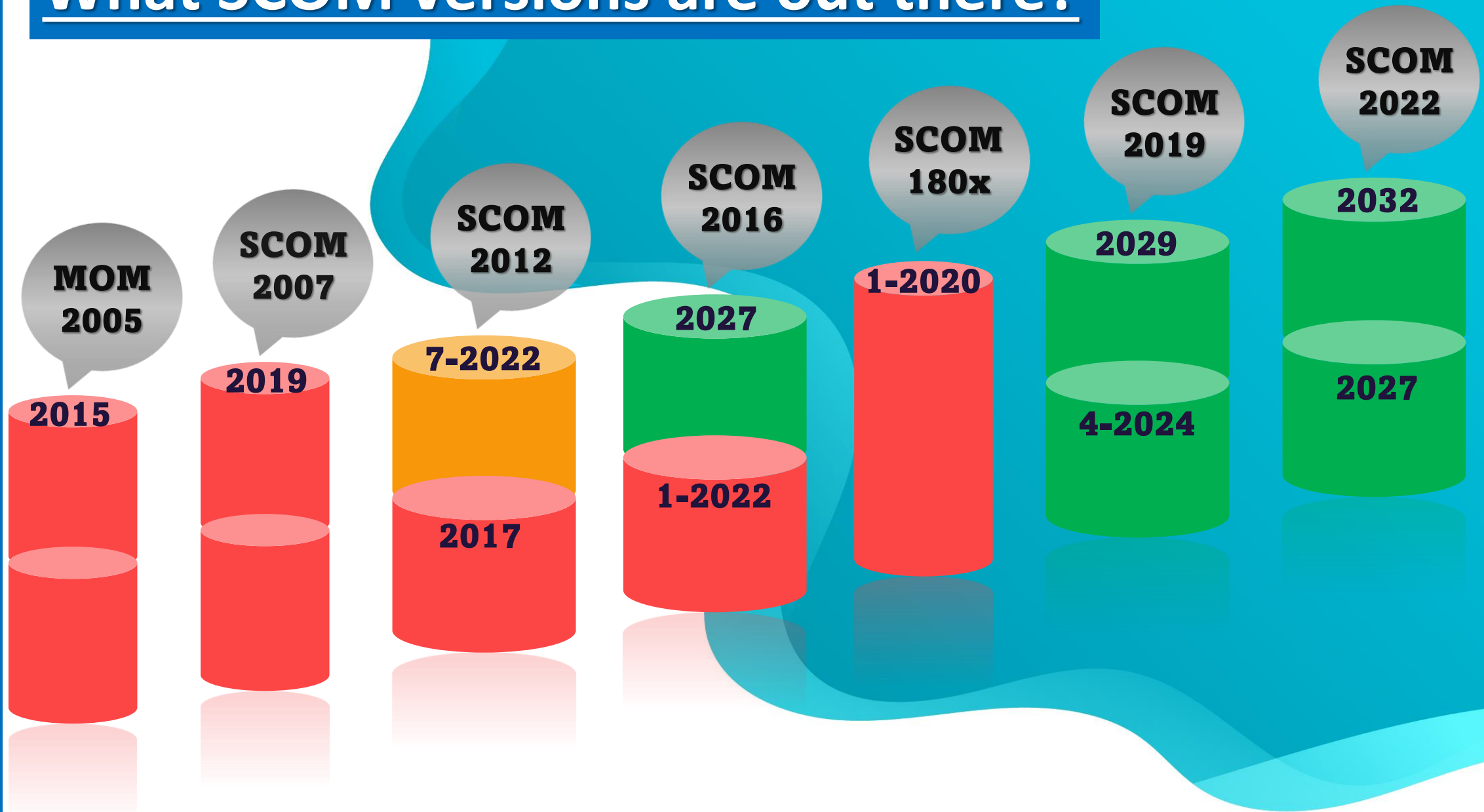
05 **In-place**

06 **Side-by-side**

07 **Mgmt  
Packs**

08 **Q&A**

# What SCOM versions are out there?



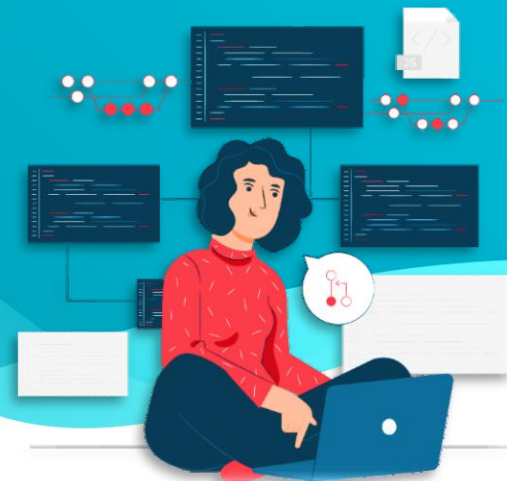
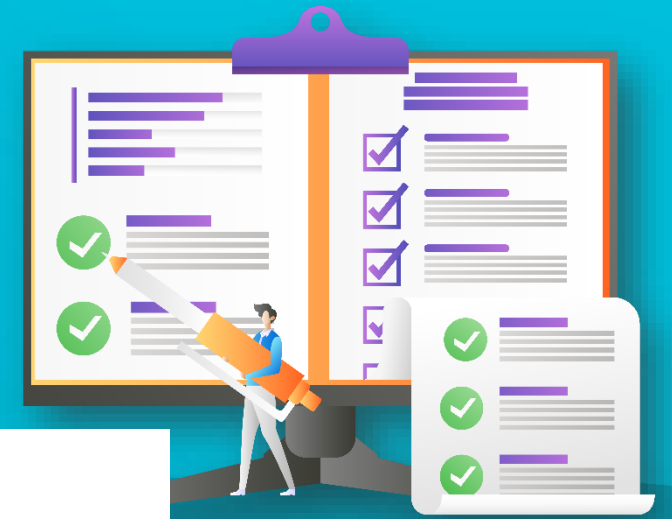
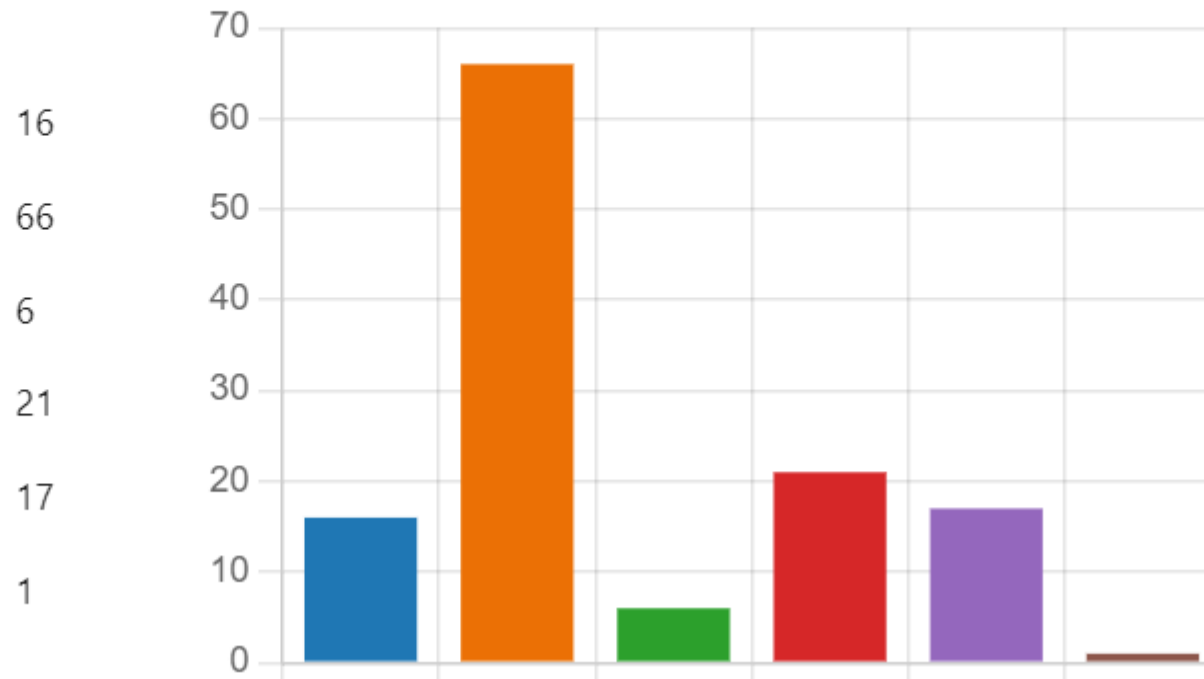
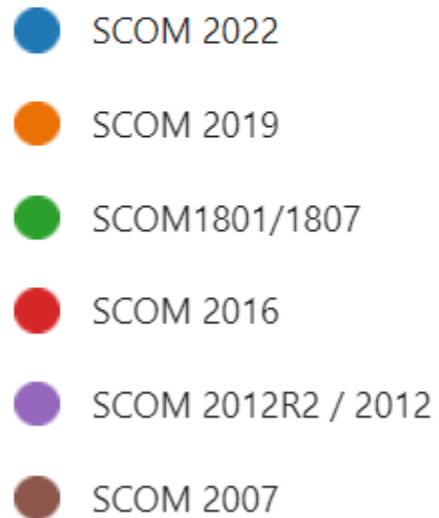


# Poll results

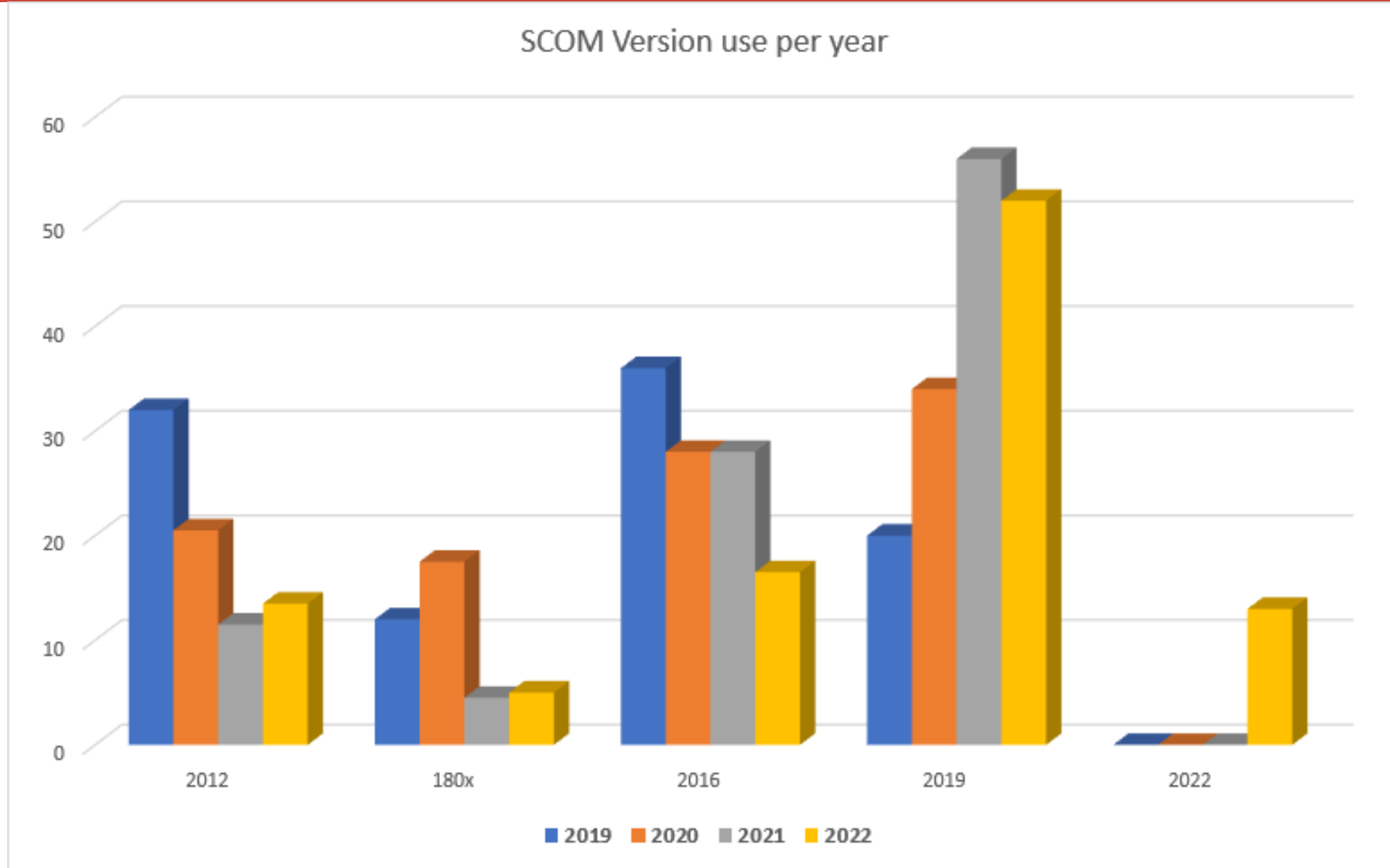
## Versions currently in use in Production

1. What SCOM version(s) are you running in production?

[More Details](#)



# What SCOM version are you using right now?



# The need for upgrades

Version  
Support

New  
Features

Security  
features





# New Features 2019

HTML 5 Dashboards

01

Support new SQL versions

02

Maintenance mode

03

New Linux/Unix OS

04

New Windows OS

05

Performance

06



# New Features 2022

**Admin RBAC**

**Alert Closure**

**Install experience**

**GMSA Support**

**Visual additions**

**Teams Notifications**



# Let's Upgrade – now what?



**Decide  
versions**

**Windows**

**SQL**

**SCOM**

**How to get  
there**

**Migration  
scenario**

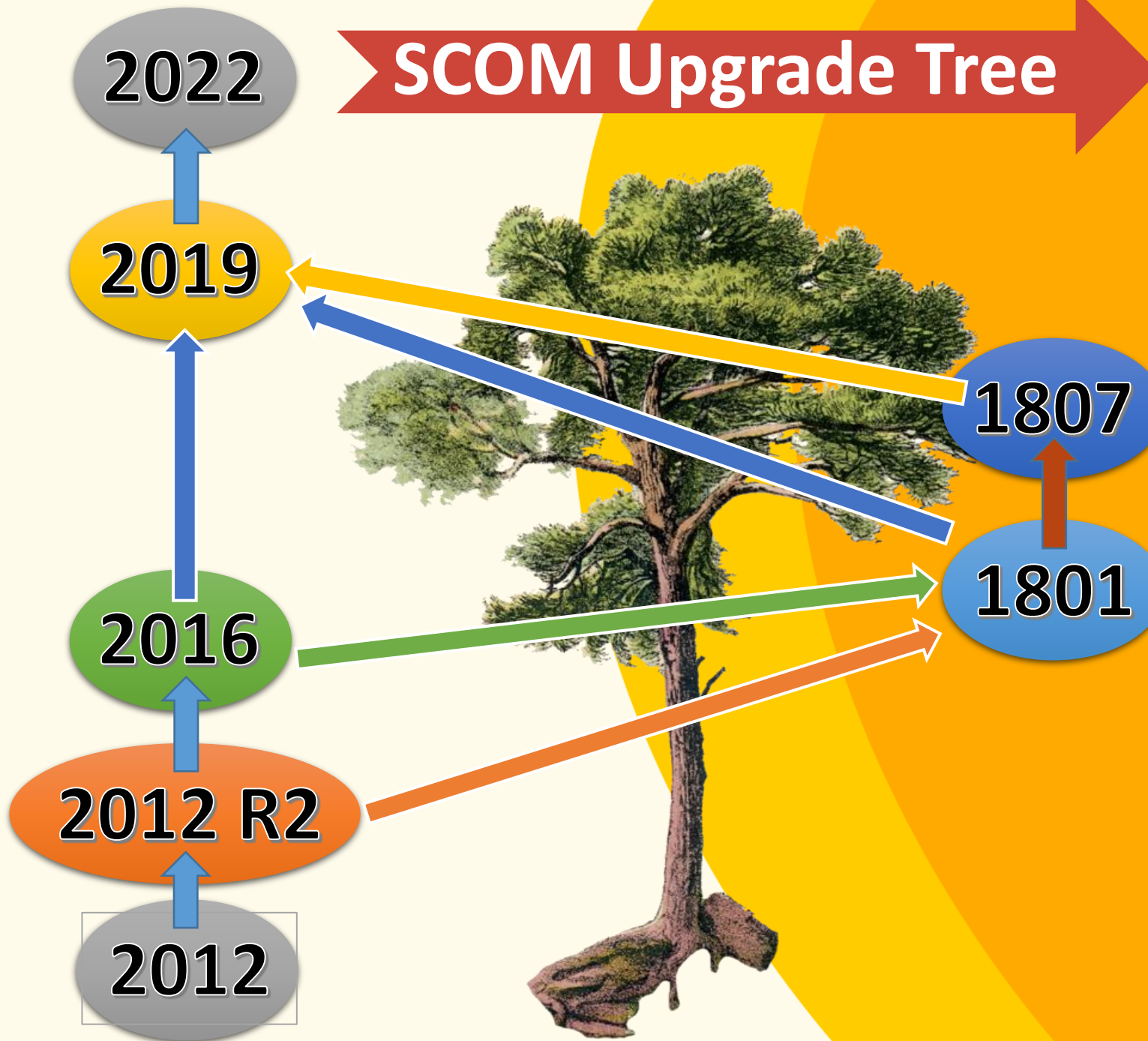
**Upgrade  
scenario**



# SCOM Upgrade Tree

LTSB

SAC



2022

2019

2019

2019

2017

2016

2016

2012 R2

2014

2012 /2008

2012  
2008

WINDOWS

SQL

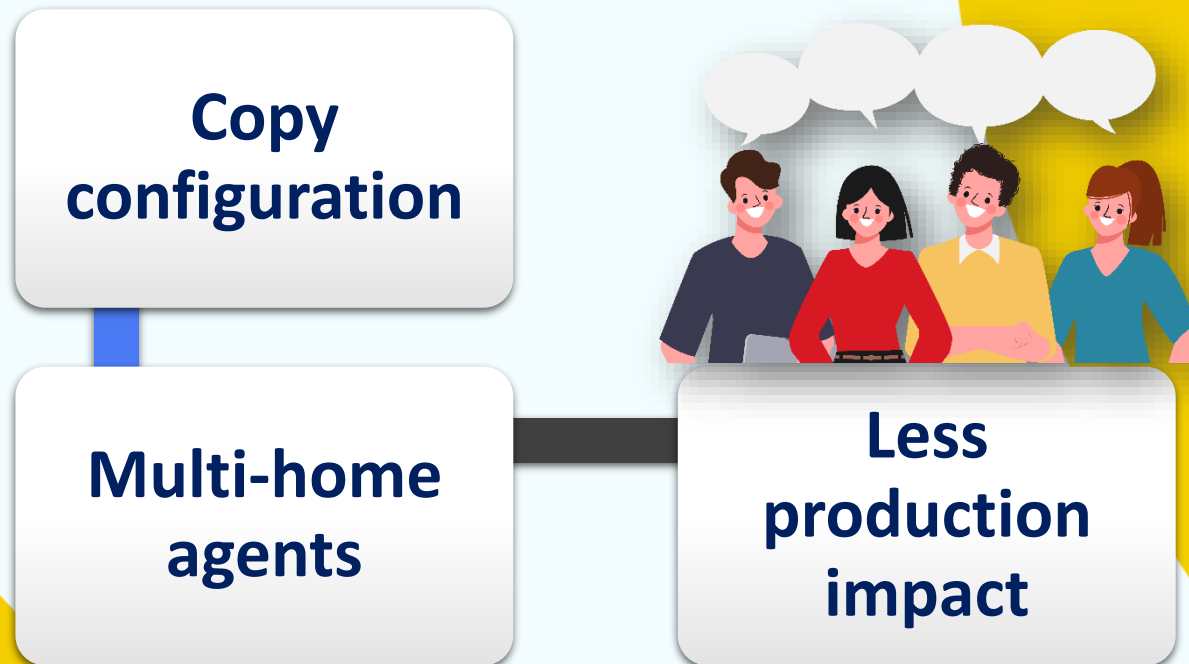


# In-Place or Side-by-side?

Based on Versions of Windows and SQL as well

If too many steps + production -> go for side-by-side

Setup latest Windows + SQL + SCOM





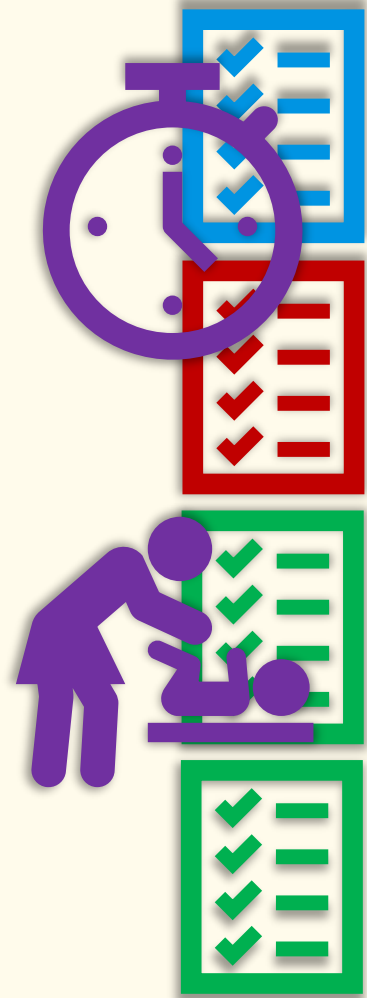
# Make a plan!



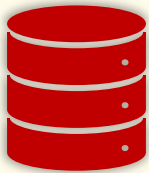
# Make a plan!



# Make a plan!



# Before In-Place Upgrade



# Before In-Place Upgrade

## Windows

- Management Server
- SQL Server
- Web & Reporting



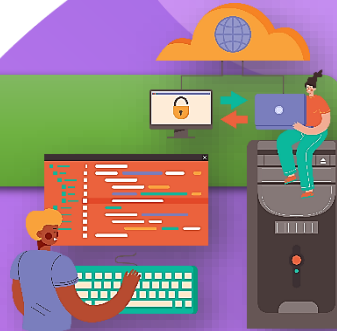
## SCOM

- SCOM Administrator

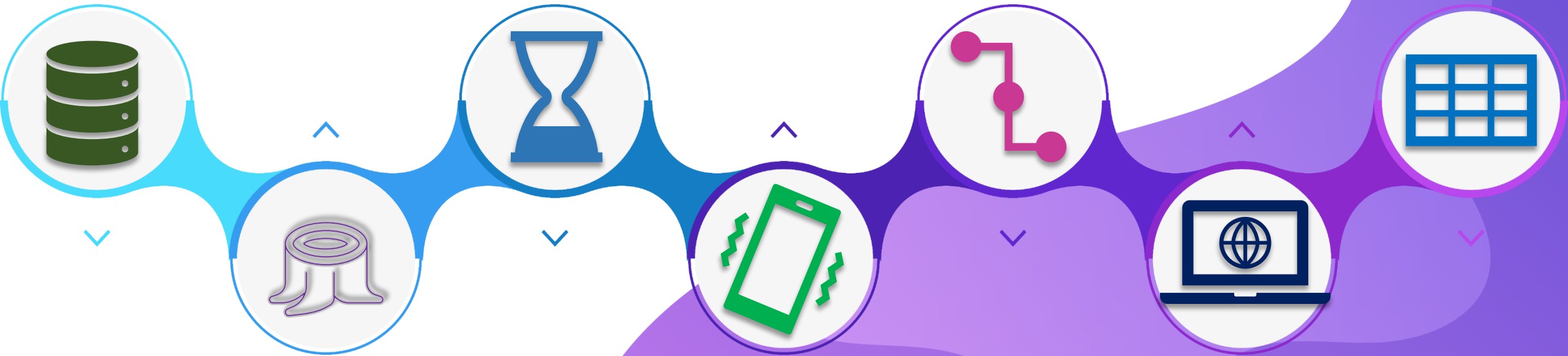


## SQL

- Sysadmin



# Before In-Place Upgrade

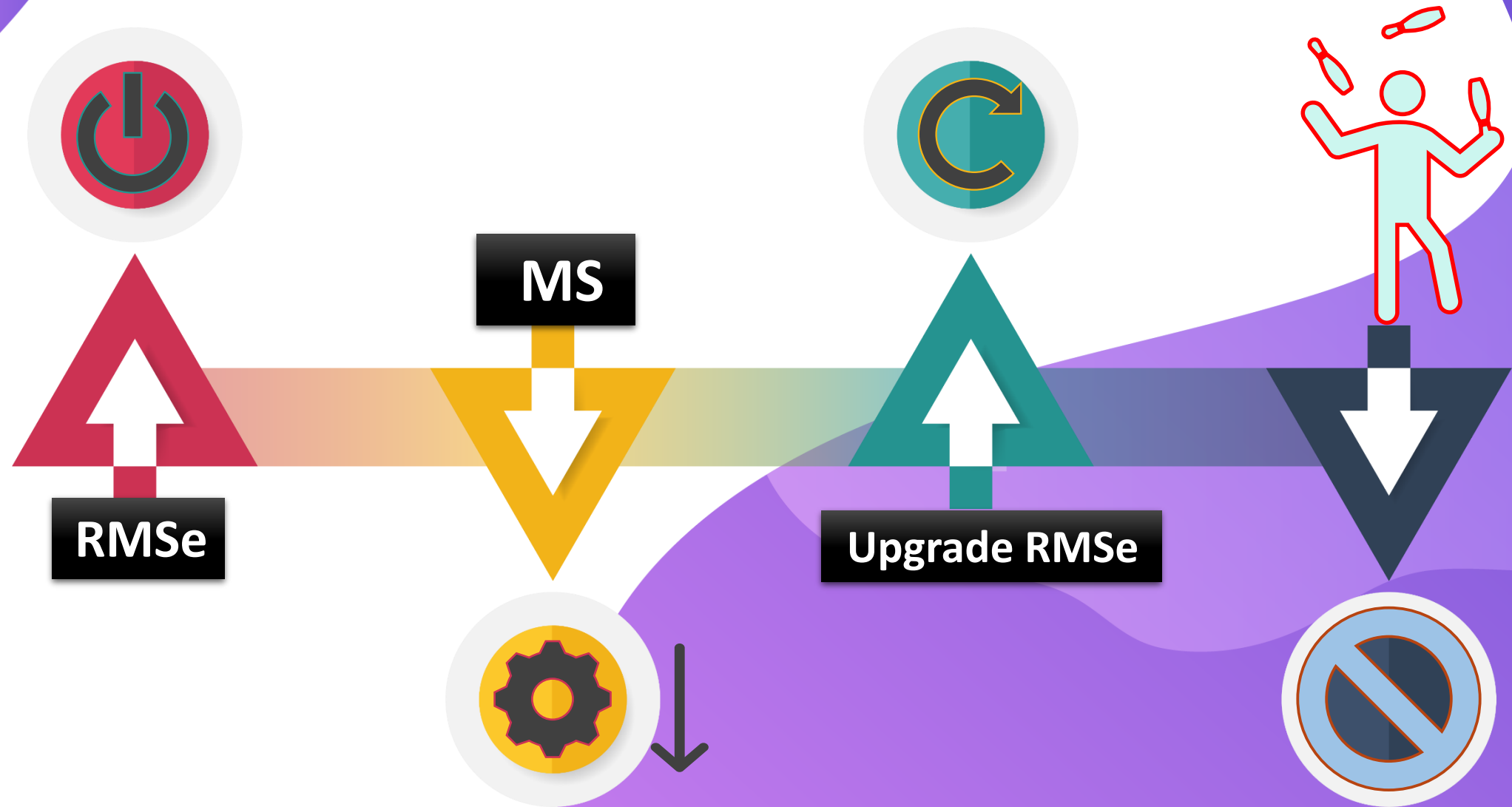




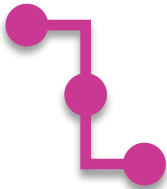
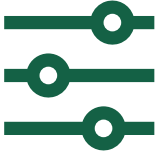
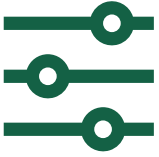
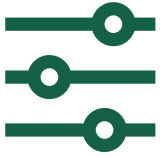
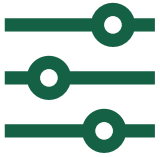
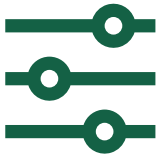
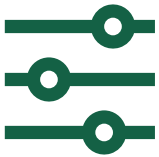
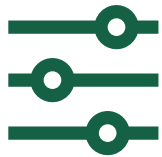
# Before In-Place Upgrade



# In-Place Upgrade



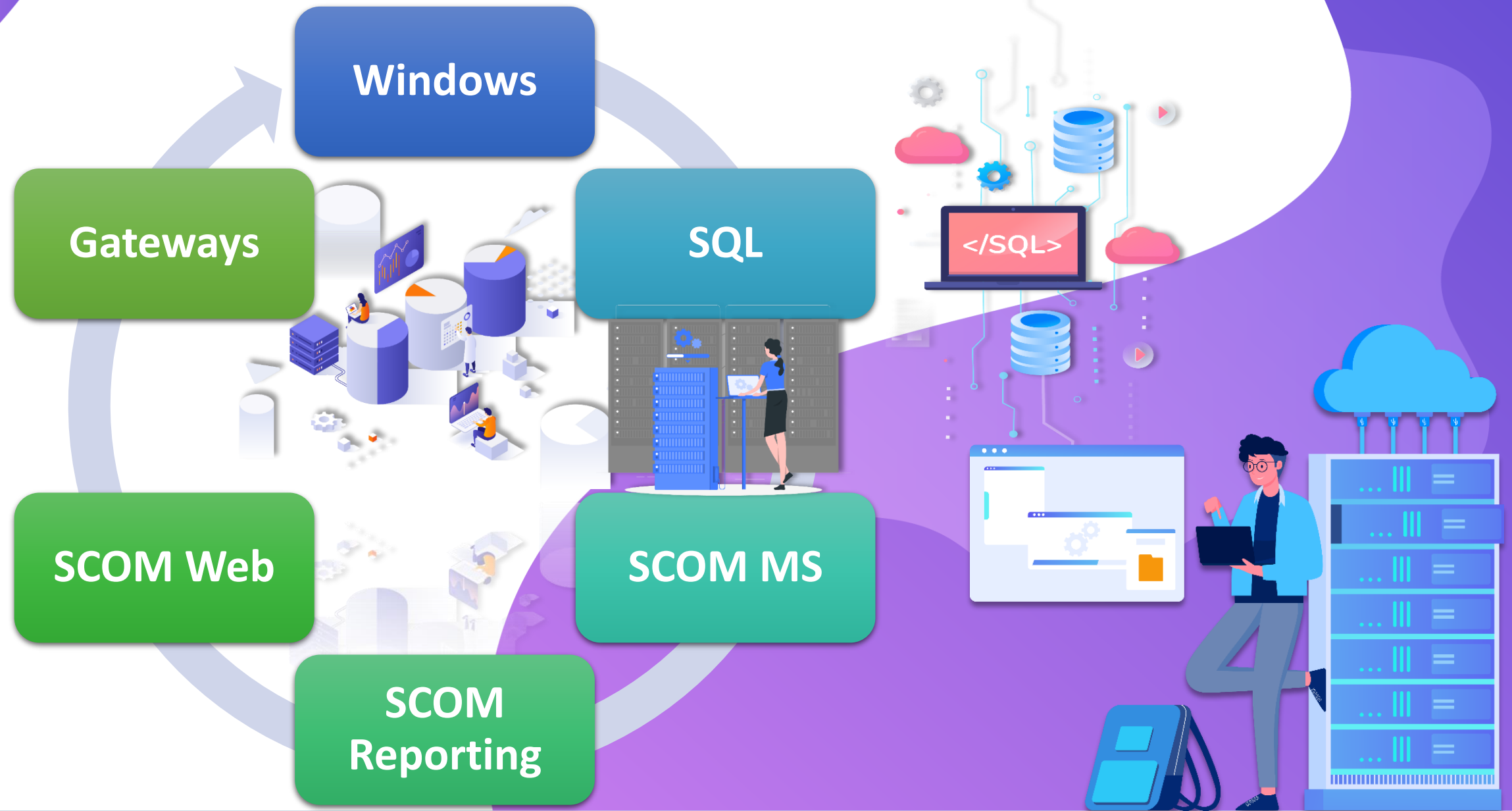
# In-Place Upgrade



# Side-by-side



# Build New Infra





Components

Management Packs

Third party packs

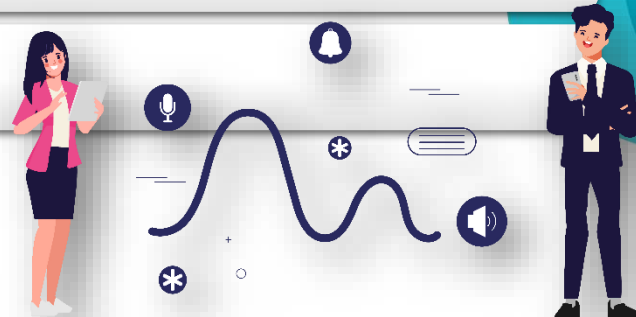
Connectors

User Roles

Web Watchers

Notifications

Etc etc



Management Server Optimization and Best Practices  
Install Agents in Test first set of Agents  
Install Default microsoft management packs  
Tuning New management packs Like SQL, OS, DHCP, DNS  
Create Override Packs  
Create Custom management Packs  
Migrate Custom and LOB Management packs  
Management Pack Backup on management server  
Other Packs Such as views and Distributed Apps  
Third Party vendor management packs  
Create Web Checks and Watcher Nodes  
Install Veeam Management Server and Collectors  
Create Veeam Overrides management packs  
Migrate RunAs Accounts  
Migrate User Rights Assignments  
Migrate Custom Reports  
Migrate Alerts Channels  
Migrate Network Devices in SCOM  
Install Linux Servers  
Create MP backup Config  
Agents multihome  
Install update Rollups on Agents based on the Agent version  
Monitor Alerts and views for servers  
Create views for SCOM Operators

#### 4. Validation and clean-up

Remove Multihome on Agents which are Reporting to Old management group  
Remove Old SCOM Group  
Handover Documents from the Migration  
SCOM technical Health Check



# Management Packs

**MP Backups**

**Recover**

**Migrate  
(seed packs)**

**Third Party  
packs**

**Download  
sealed packs**

**Un-sealed  
packs**



# Management Packs

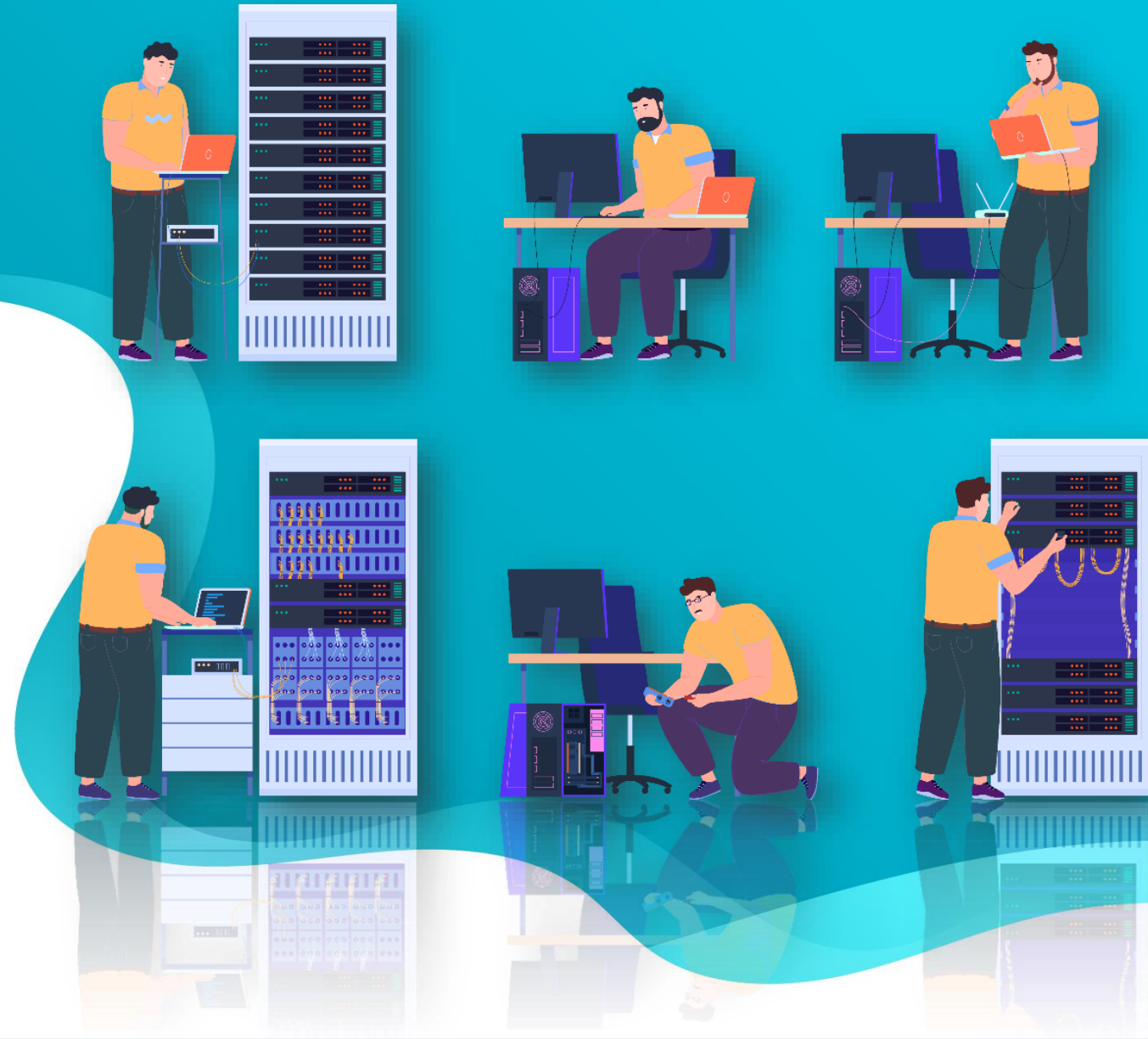
Import Sealed

Throw out unneeded packs

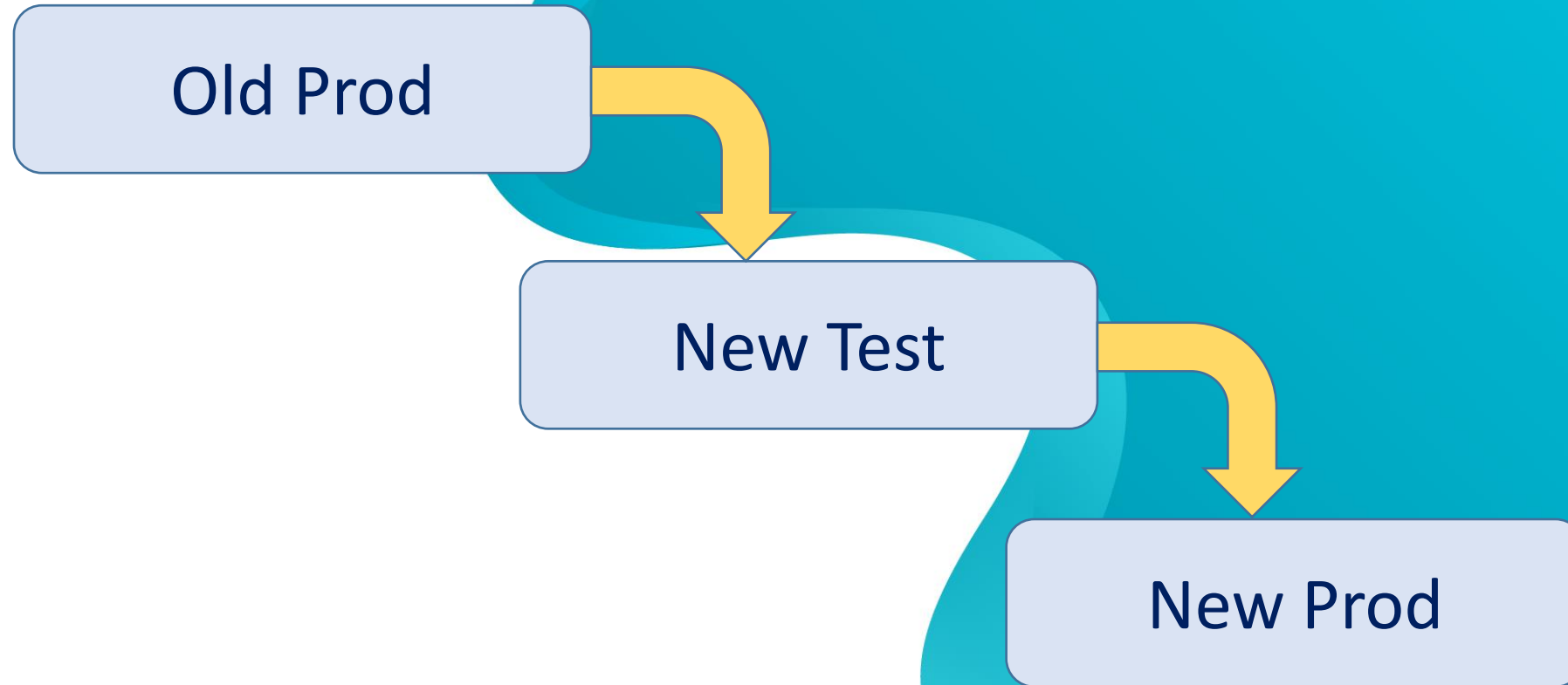
Some packs change a lot

References!

Web Watchers



# One Approach



# MP Tooling?

- Manual XML
- Try DevOps
- Try Automation
- EasyTune for overrides
- Ask Bob
  - Asks colleague
- Silect MP Studio



# How can Silect MP Studio help?

Silect MP Studio

File View Tools Window Help

Test MP New MP View MP Save MP Edit Fragment Manage Overrides No Notifications Export to Excel MP Studio Help

MP Studio Explorer

## Management Packs

Filter:

- Store
  - Backups
  - Bob
  - Sealed
- Management Groups
  - TQ53 on server TQ-M053
    - 360 Application Monitoring Dashboards
    - Active Directory Domain Services Common Class Library
    - Active Directory Domain Services for Microsoft Windows S
    - Active Directory Domain Services for Microsoft Windows S
    - Active Directory Domain Services for Microsoft Windows S
    - Active Directory Domain Services for Microsoft Windows S
    - Active Directory Server Domain Member (Monitoring)
    - AggregationModuleLibrary
    - AuditPolicy
    - Baselining Tasks Library

Getting Started Information Explore - TQ53

## Management Group Summary Information

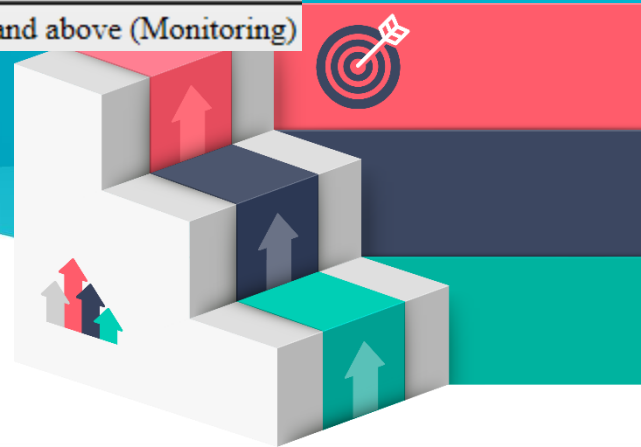
This screen provides a summary of the selected management group.

### Management Group TQ53 on server TQ-M053

309 management packs installed.

#### Management Pack

360 Application Monitoring Dashboards
Active Directory Domain Services Common Class Library
Active Directory Domain Services for Microsoft Windows Server 2012 R2 (Discovery)
Active Directory Domain Services for Microsoft Windows Server 2012 R2 (Monitoring)
Active Directory Domain Services for Microsoft Windows Server 2016 and above (Discovery)
Active Directory Domain Services for Microsoft Windows Server 2016 and above (Monitoring)



# Silect MP Studio – MP Explorer

Back Forward Filter All Elements Search hue

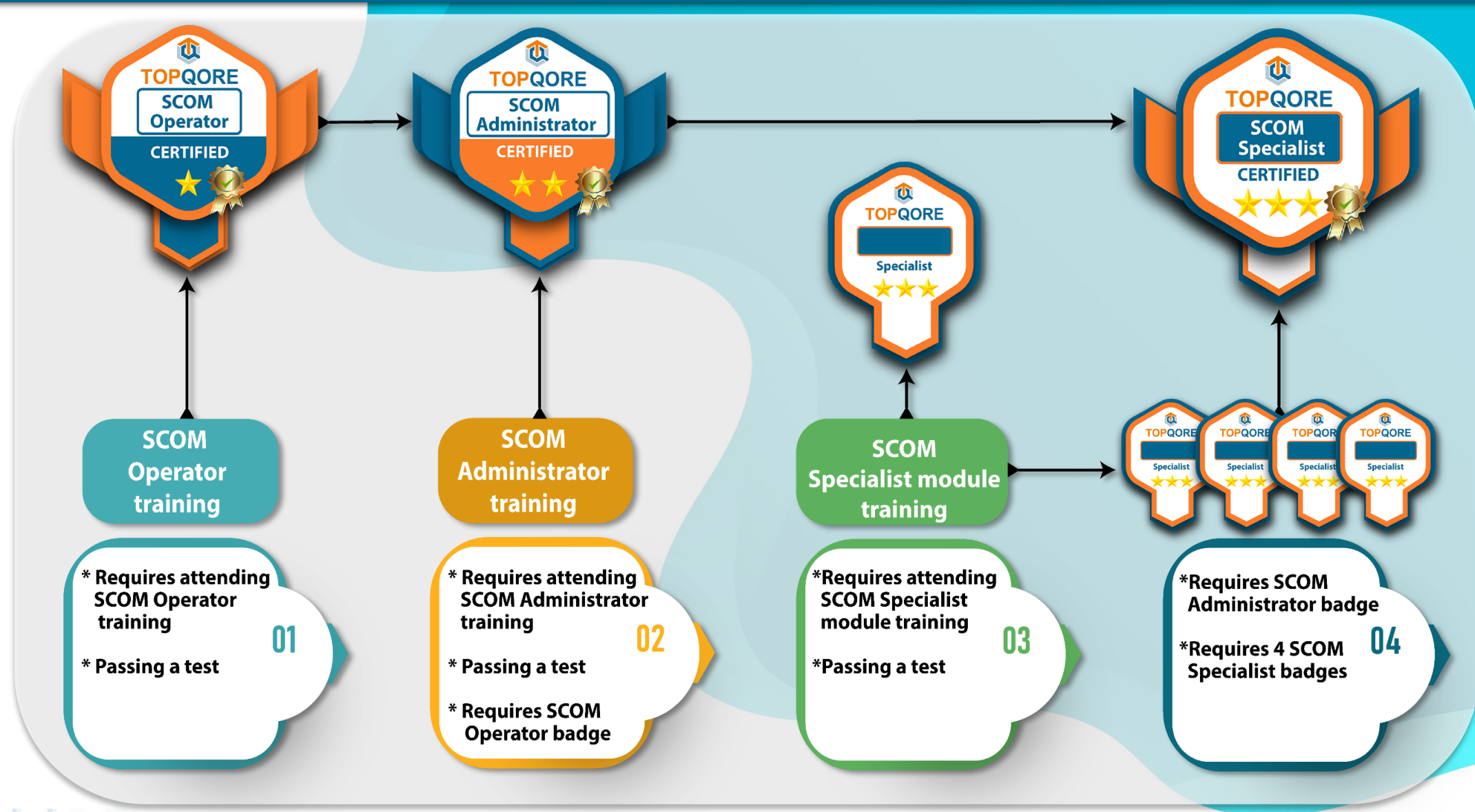
Properties... Show XML... Show Hierarchy Base Class: Logical Entity Derived Classes 3 Relationship: Hue Bridge Hosts Sensor Relationship Show Instances... 20 Discovered By: Hue Bridge Sensor Discovery Referenced By 8

Drag a column header here to group by that column.

Type	Name	Display Name	
ManagementPack	TQ.HueBridge.Monitoring	TQ Hue Bridge Monitoring	TQ Hue Bridge Monitoring
Class	TQ.HueBridge.Monitoring.HueBridge	Hue Bridge	Hue Bridge
Class	TQ.HueBridge.Monitoring.HueBridge.Light	Hue Bridge Light	Hue Bridge Light
Class	TQ.HueBridge.Monitoring.HueBridge.Sensor	Hue Bridge Sensor	Hue Bridge Sensor
Class	TQ.HueBridge.Monitoring.HueBridge.Sensor.Light	Hue Bridge Light Sensor	Hue Bridge Light Sensor
Class	TQ.HueBridge.Monitoring.HueBridge.Sensor.Motion	Hue Bridge Motion Sensor	Hue Bridge Motion Sensor
Class	TQ.HueBridge.Monitoring.HueBridge.Sensor.Temp	Hue Bridge Temperature Sensor	Hue Bridge Temperature Sensor



# TopQore SCOM Certification program



# Q&A



[www.topqore.com](http://www.topqore.com)

[contact@TopQore.com](mailto:contact@TopQore.com)



Use the chat to send  
in your questions.



We will answer  
them one by one.